

# SOO LOCKS UPDATE

October 2021  
Kevin Sprague  
Soo Area Engineer



*"The views, opinions and findings contained in this report are those of the authors(s) and should not be construed as an official Department of the Army position, policy or decision, unless so designated by other official documentation."*



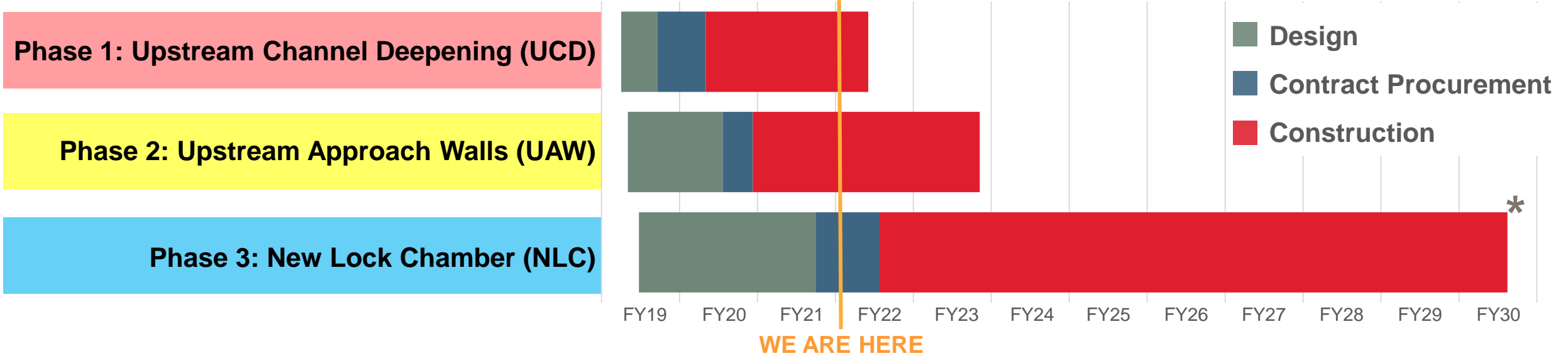
US Army Corps  
of Engineers



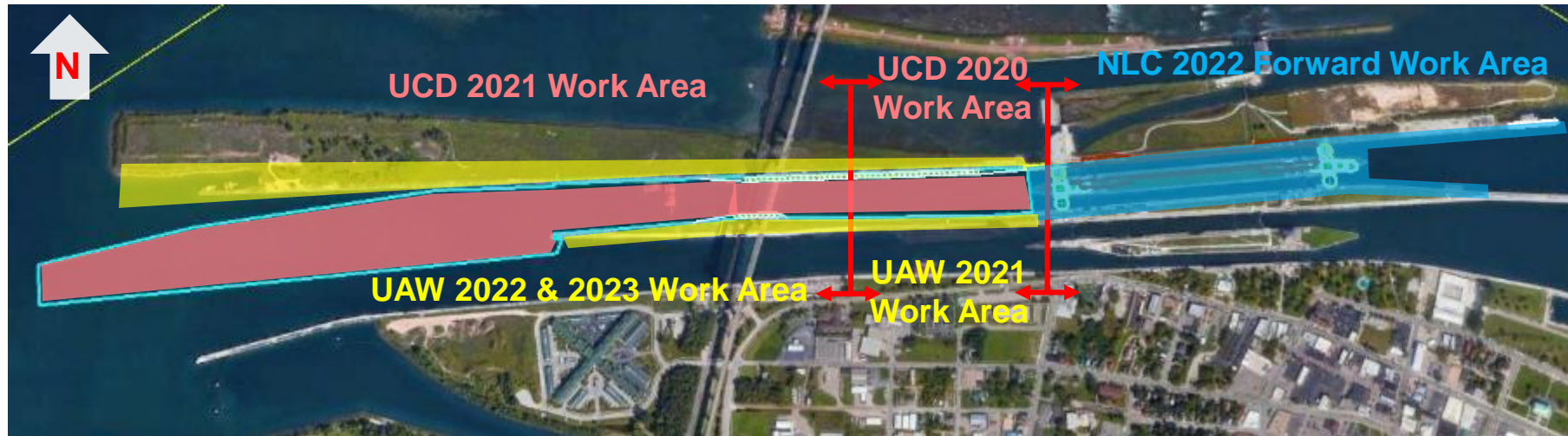


# NEW LOCK AT THE SOO - STATUS

2



\* Early completion could be realized with efficient funding, and favorable weather conditions





# NEW LOCK AT THE SOO – ARTISTIC RENDERING

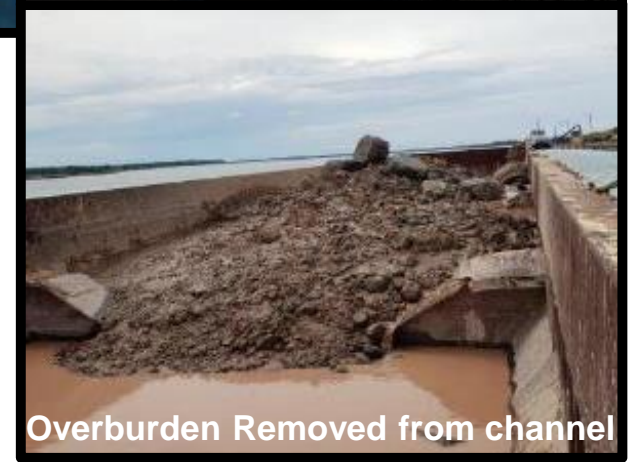
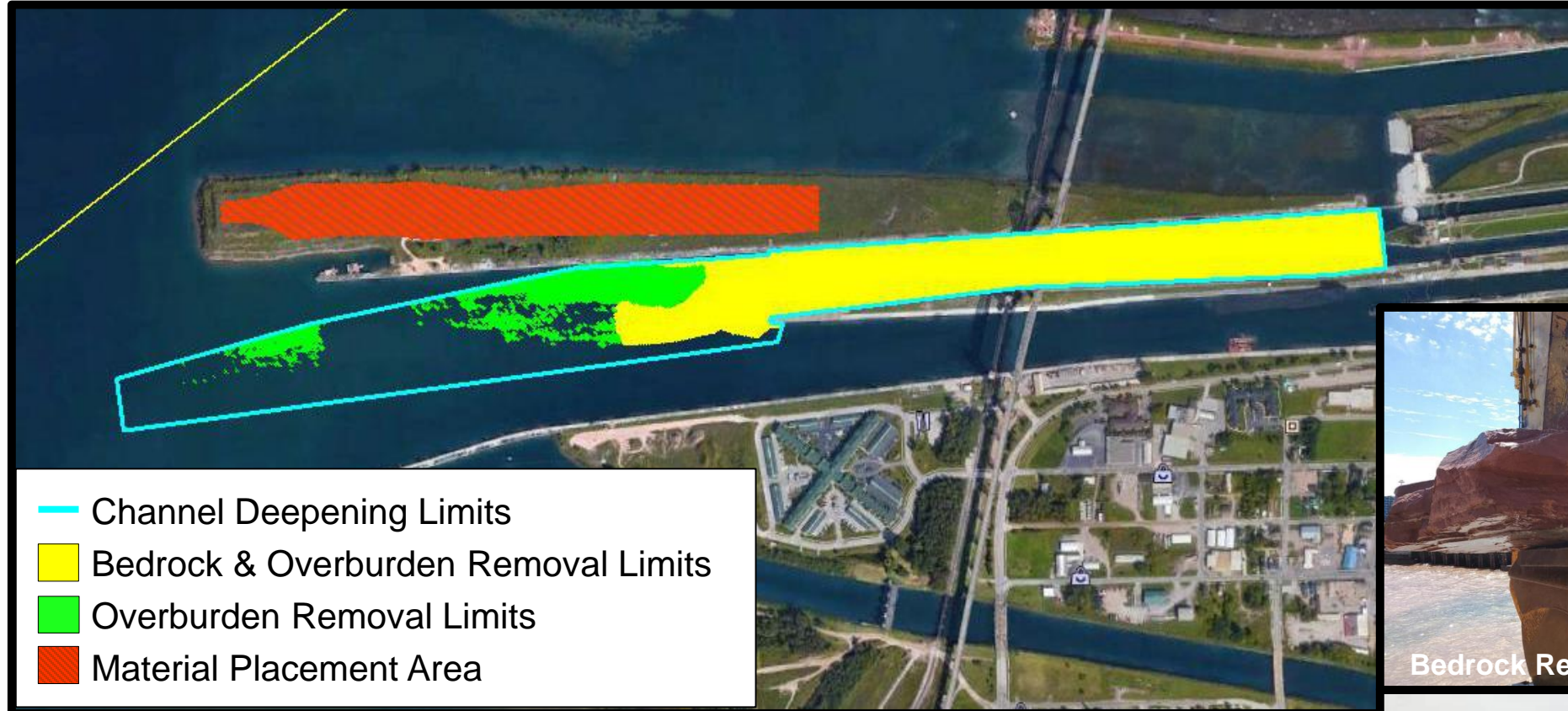






# PHASE 1: UPSTREAM CHANNEL DEEPENING SCOPE

4



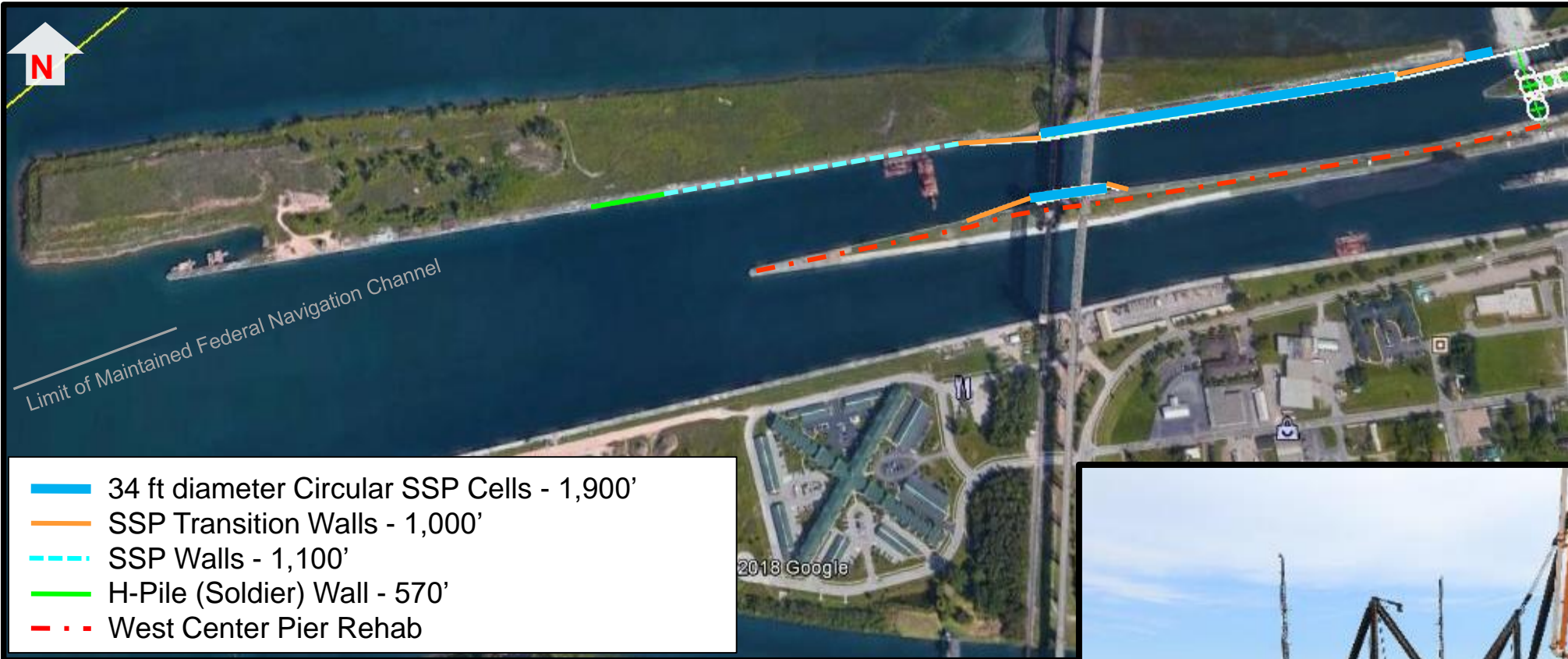
**Scope:** Remove 250,000 CY of Jacobsville sandstone and overburden to deepen the Upstream Approach Channel to depth of 30 feet

## Construction Status:

- Contract awarded in January 2020 to Trade West Construction Co. of Nevada.
- Contractor has completed roughly 90% of the required contract work.
- Contractor is on track to substantially complete work in Nov 2021



# PHASE 2: UPSTREAM APPROACH WALLS



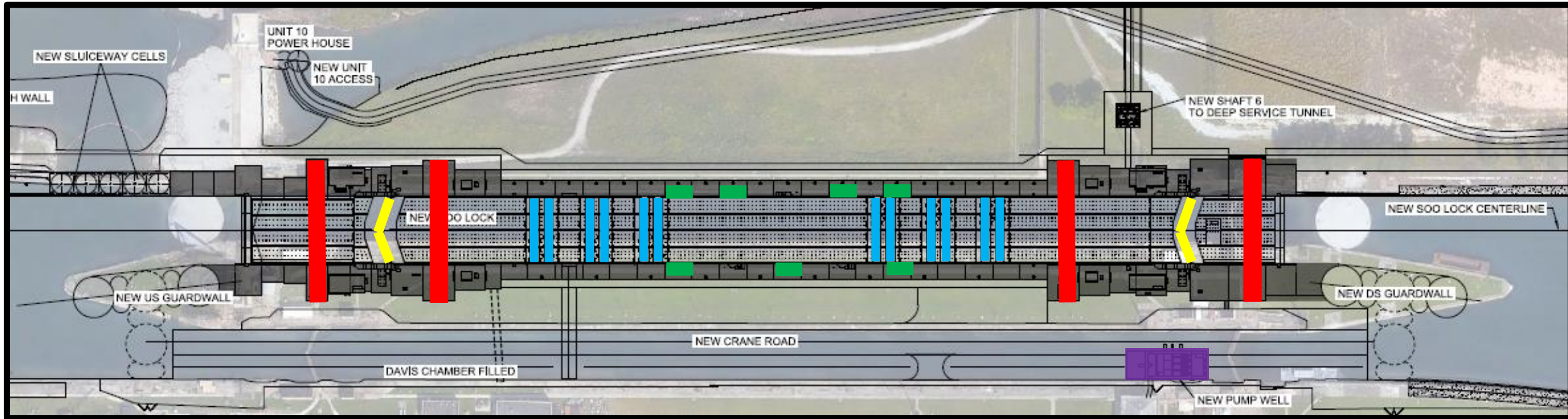
**Scope:** Rehabilitate walls, concrete caps, mooring bollards, electrical, and lighting upstream of the New Soo Lock

## Project Status:

- Contract awarded to Kokosing Alberici in September 2020
- Contractor arrived on site in April 2021 and is scheduled to be complete work in Fall 2023



# PHASE 3: NEW LOCK CHAMBER



**Scope:** Construct new 1,200' long by 110' wide by 32' deep chamber and rehabilitate downstream approach walls.

## Project Status:

- 100% Design completed in Aug 2021
- Construction contract solicitation in progress
- Construction contract award expected in February 2022
- Contractor mobilization expected in Spring 2022

## KEY FEATURES

-  Miter Gates
-  Filling & Emptying System
-  Ship Arrestors
-  Hands Free Mooring
-  New Pump Well



# FY22 WINTER MAINTENANCE



- Mac Tainter (Fill/Empty) Valve Rehabilitation
- Poe Gate 1 Rehab., Coating Replacement
- MacArthur Lock Gate 5 (Downstream Operating Gate) Sill Repair
- Poe Gate 3 (Downstream Operating Gate) Structural Repair and Seal Replacement
- Poe Valve 1 North and South Pin and Bushing Replacement
- Fender Timber Replacements





# TIMBER REMOVAL & SCAFFOLD INSTALL





# TOP OF ENCLOSURE PRIOR TO CEILING INSTALLATION





# HEATED ENCLOSURE





# SANDBLASTING



# VINYL PAINT SYSTEM (WHITE PRIMER)







# FENDER INSTALL







DIAGONAL REPLACE/  
INSTALL/STRESS















